

SECTION A-A
SCALE 1:1
SCALE 2:1

8 THREADS PER INCH, .125 PITCH,
380° FULL DEPTH THREAD

REFERENCE	TOLERANCE	DIMENSION	UNITS
E	±0.010 [0.25]	0.865 [21.97]	in [mm]
T	±0.010 [0.25]	0.950 [24.13]	in [mm]
H (Seated)	REFERENCE	0.517 [13.13]	in [mm]
H (Inner)	±0.007 [.018]	0.388 [9.86]	in [mm]
OAH	±0.015 [0.38]	0.668 [16.97]	in [mm]
OD	±0.015 [0.38]	1.217 [30.91]	in [mm]
PART WEIGHT	± 0.60	4.10	g

STATIC TORQUE RECOMMENDATION
10-18 in-lbs
THIS REQUIREMENT MAY VARY DEPENDING
UPON BOTTLE MATERIAL, NECK FINISH, AND
CAPPING EQUIPMENT

DRAWING TYPE : CUSTOMER

REPLACES DRAWINGS:
C-8016

DIMENSIONS ENCLOSED IN ()
INDICATE REFERENCE
DIMENSIONS AND NO TOLERANCE
LIMITS ARE ESTABLISHED

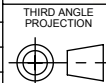
TOLERANCES UNLESS OTHERWISE SPECIFIED

DIMENSION (inches)	TOLERANCE	DIMENSION (mm)	TOLERANCE
0-0.787	±0.006	0-20	±0.152
0.788-1.181	±0.008	21-30	±0.203
1.182-2.756	±0.012	31-70	±0.305
2.757-3.937	±0.016	71-100	±0.406
3.938-5.096	±0.020	101-150	±0.508
5.097-7.874	±0.024	151-200	±0.610
7.875-9.843	±0.032	201-250	±0.813

ANGULAR TOLERANCE ± 2°

PROPRIETARY AND CONFIDENTIAL

THIS DRAWING IS PROTECTED BY COPYRIGHT AND CONTAINS INFORMATION
PROPRIETARY TO MOLD-RITE, WEATHERCHEM AND STULL TECHNOLOGIES.
ANY REPRODUCTION, DISCLOSURE, OR USE OF ITS CONTENTS OR ANY PART
THEREOF IS EXPRESSLY PROHIBITED EXCEPT AS MOLD-RITE, WEATHERCHEM
AND STULL TECHNOLOGIES OTHERWISE MAY AGREE IN WRITING



SOLIDWORKS

DISTRIBUTION
CODE

D

DRAWING NAME

24-400 CRC PDT - PDT ASSM
PICTO

DRAWING NUMBER

CQA - 10156

MATERIAL

POLYPROPYLENE

DRAWN BY:

BDG

1/19/2016

ENG APPR.

BDG

1/13/2017

QA APPR.

ACP

1/15/2017

MODEL NUMBER:

PM 10153 24-400 CRC PDT Assm

SCALE

1:1

SHEET SIZE

11in*17in

SHEET

1 of 3

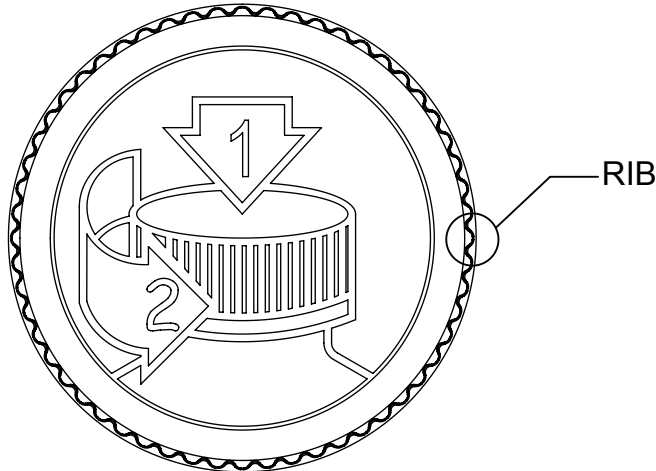
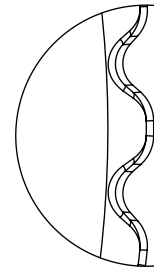
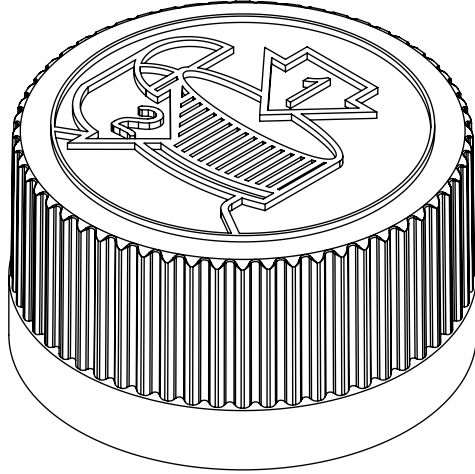
REV.NP

01.AD

THE CLOSURE DIMENSIONS
DEPICTED ARE THOSE WHICH HAVE GENERALLY BEEN
FOUND TO BE FUNCTIONAL BASED ON INDUSTRY
EXPERIENCE BECAUSE OF VARIABILITY IN GLASS AND
PLASTIC CONTAINER FINISHES, EACH CLOSURE/FINISH
SYSTEM SHOULD BE INDIVIDUALLY EVALUATED AND
TESTED TO ENSURE IT MEETS APPLICABLE
PERFORMANCE CRITERIA. SEE QUALITY ASSURANCE
SPECIFICATIONS FOR ADDITIONAL INFORMATION.

MOLD-RITE, WEATHERCHEM AND STULL TECHNOLOGIES
RESERVES THE RIGHT TO REVISE ANY OR ALL
SPECIFICATIONS AND REQUIREMENTS.

REVISIONS					
DATE	REV.	N/P	DESCRIPTION	ENG	DRW
10/20/14	01	AA	INITIAL DRAWING RELEASED	BDG	BDG
05/27/16	01	AB	UPDATED SPEC BASED ON REQUALIFICATION AND ADDITION OF CAPACITY MOLD	BDG	BDG
01/06/17	01	AC	UPDATED PRINT FORMAT	BDG	BDG
01/13/17	01	AD	CORRECTED RNF E DIM 0.848 WAS 1.848	BDG	BDG



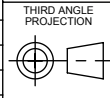
DETAIL RIB
SCALE 10 : 1
(56) EQUISPACED RIBS

SCALE 2 : 1

THE CLOSURE DIMENSIONS DEPICTED ARE THOSE WHICH HAVE GENERALLY BEEN FOUND TO BE FUNCTIONAL BASED ON INDUSTRY EXPERIENCE BECAUSE OF VARIABILITY IN GLASS AND PLASTIC CONTAINER FINISHES. EACH CLOSURE/FINISH SYSTEM SHOULD BE INDIVIDUALLY EVALUATED AND TESTED TO ENSURE IT MEETS APPLICABLE PERFORMANCE CRITERIA. SEE QUALITY ASSURANCE SPECIFICATIONS FOR ADDITIONAL INFORMATION.

MOLD-RITE, WEATHERCHEM AND STULL TECHNOLOGIES RESERVES THE RIGHT TO REVISE ANY OR ALL SPECIFICATIONS AND REQUIREMENTS.

DRAWING TYPE : CUSTOMER			
REFERENCES:		DIMENSIONS ENCLOSED IN () INDICATE REFERENCE DIMENSIONS AND NO TOLERANCE LIMITS ARE ESTABLISHED	
TOLERANCES UNLESS OTHERWISE SPECIFIED			
DIMENSION (inches)	TOLERANCE	DIMENSION (mm)	TOLERANCE
0-0.787	±0.006	0-20	±0.152
0.788-1.181	±0.008	21-30	±0.203
1.182-2.756	±0.012	31-70	±0.305
2.757-3.937	±0.016	71-100	±0.406
3.938-5.096	±0.020	101-150	±0.508
5.097-7.874	±0.024	151-200	±0.610
7.875-9.843	±0.032	201-250	±0.813
ANGULAR TOLERANCE ± 2°			
PROPRIETARY AND CONFIDENTIAL			
THIS DRAWING IS PROTECTED BY COPYRIGHT AND CONTAINS INFORMATION PROPRIETARY TO MOLD-RITE, WEATHERCHEM AND STULL TECHNOLOGIES. ANY REPRODUCTION, DISCLOSURE, OR USE OF ITS CONTENTS OR ANY PART THEREOF IS EXPRESSLY PROHIBITED EXCEPT AS MOLD-RITE, WEATHERCHEM AND STULL TECHNOLOGIES OTHERWISE MAY AGREE IN WRITING			



DISTRIBUTION CODE
D

DRAWING NAME
24-400 CRC PDT - PDT ASSM PICTO

DRAWING NUMBER
CQA - 10156

MATERIAL
POLYPROPYLENE

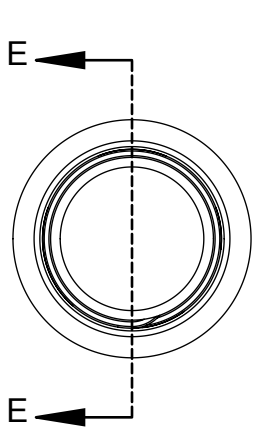
DRAWN BY: BDG 1/19/2016

ENG APPR: BDG 1/13/2017

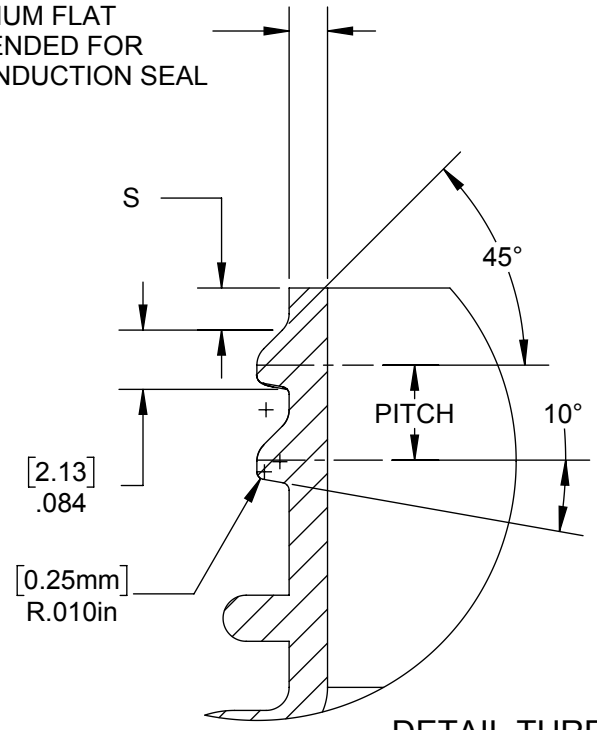
QA APPR: ACP 1/15/2017

MODEL NUMBER:
PM 10153 24-400 CRC PDT Assm

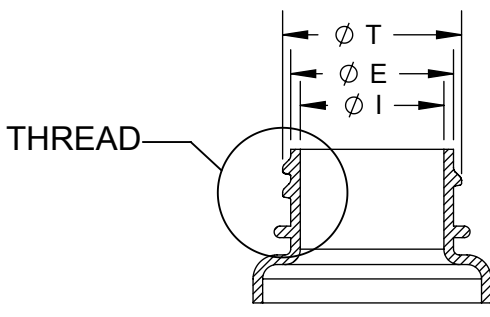
SCALE	SHEET SIZE	SHEET	REV.NP
1:2	8.5 X 11	2 of 3	01.AD



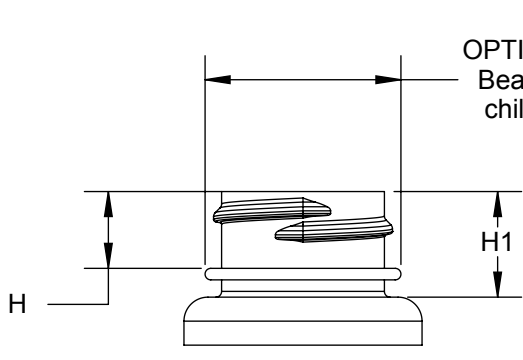
[1.27mm]
 .050 MINIMUM FLAT
 RECOMMENDED FOR
 PROPER INDUCTION SEAL



DETAIL THREAD
 SCALE 4 : 1



SECTION E-E



OPTIONAL construction:
 Bead NOT required for
 child resistant closure
 function

REFERENCE	TOLERANCE	UNITS	DIMENSION
E	±0.008 [0.20]	in [mm]	0.848 [21.54]
T	±0.008 [0.20]	in [mm]	0.932 [23.67]
I	MINIMUM	in [mm]	0.516 [13.11]
S	±0.015 [0.38]	in [mm]	0.046 [1.17]
H	MINIMUM	in [mm]	0.400 [10.16]
H1	MINIMUM	in [mm]	0.550 [13.97]
ØBEAD	MAXIMUM	in [mm]	1.020 [25.91]
TPI		in	8
PITCH		in [mm]	0.125 [3.16]

NOTE: THE NOMINAL ORIENTATION ILLUSTRATED IS BASED ON NOMINAL DIMENSIONS OF BOTH THE CLOSURE AND THE RECOMMENDED NECK FINISH. FOR EXACT ORIENTATION EACH BOTTLE SHOULD BE EVALUATED ON A CASE BY CASE BASIS.

THE CLOSURE DIMENSIONS DEPICTED ARE THOSE WHICH HAVE GENERALLY BEEN FOUND TO BE FUNCTIONAL BASED ON INDUSTRY EXPERIENCE BECAUSE OF VARIABILITY IN GLASS AND PLASTIC CONTAINER FINISHES, EACH CLOSURE/FINISH SYSTEM SHOULD BE INDIVIDUALLY EVALUATED AND TESTED TO ENSURE IT MEETS APPLICABLE PERFORMANCE CRITERIA. SEE QUALITY ASSURANCE SPECIFICATIONS FOR ADDITIONAL INFORMATION.

MOLD-RITE, WEATHERCHEM AND STULL TECHNOLOGIES RESERVES THE RIGHT TO REVISE ANY OR ALL SPECIFICATIONS AND REQUIREMENTS.

DRAWING TYPE : CUSTOMER

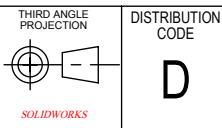
DIMENSIONS ENCLOSED IN () INDICATE REFERENCE DIMENSIONS AND NO TOLERANCE LIMITS ARE ESTABLISHED

TOLERANCES UNLESS OTHERWISE SPECIFIED			
DIMENSION (inches)	TOLERANCE	DIMENSION (mm)	TOLERANCE
0-0.787	±0.006	0-20	±0.152
0.788-1.181	±0.008	21-30	±0.203
1.182-2.756	±0.012	31-70	±0.305
2.757-3.937	±0.016	71-100	±0.406
3.938-5.096	±0.020	101-150	±0.508
5.097-7.874	±0.024	151-200	±0.610
7.875-9.843	±0.032	201-250	±0.813

ANGULAR TOLERANCE ± 2°

PROPRIETARY AND CONFIDENTIAL

THIS DRAWING IS PROTECTED BY COPYRIGHT AND CONTAINS INFORMATION PROPRIETARY TO MOLD-RITE, WEATHERCHEM AND STULL TECHNOLOGIES. ANY REPRODUCTION, DISCLOSURE, OR USE OF ITS CONTENTS OR ANY PART THEREOF IS EXPRESSLY PROHIBITED EXCEPT AS MOLD-RITE, WEATHERCHEM AND STULL TECHNOLOGIES OTHERWISE MAY AGREE IN WRITING



DISTRIBUTION CODE
D

DRAWING NAME
 24-400 CRC PDT - PDT ASSM
 RECOMMENDED NECK FINISH

DRAWING NUMBER
 CQA - 10156

MATERIAL

DRAWN BY: BDG 1/19/2016

ENG APPR: BDG 1/13/2017

QA APPR: ACP 1/15/2017

SCALE	SHEET SIZE	SHEET	REV/N/P
1:1	8.5 X 11	3 of 3	01.AD