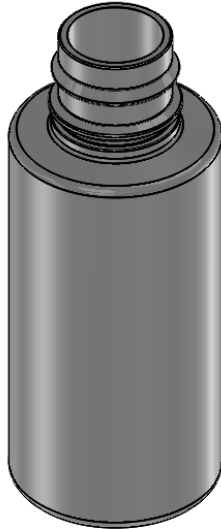




REVISIONS				
REV.	DR/ECN#	DESCRIPTION	DATE	APPROVED
1	ECN#1320	RELEASE FOR PRODUCTION CHANGED PART NAME FROM 30ML PET WESTON TO 1oz ROUND PETE 20	4/8/2010	GJK
-	ECN#1335	ADDED MATERIAL SPECIFICATION CHART WITH NEW PART NUMBER R-BOTL0428A	6/3/2010	GJK
1-02	ECN#1766	ADDED NEW CHART TO DRAWING WITH FOUR NEW PART NUMBERS BOTL0048 - ORANGE, BOTL0049 - GREEN, BOTL0050 - WHITE, & BOTL0051 - BLUE. UPDATED TITLE BLOCK	1/30/2013	GJK
1-03	ECN#2318	CHANGED PART # R-BOTL0428A MATERIAL FROM E-550FDA TO BARIQ.80	11/5/15	GJK

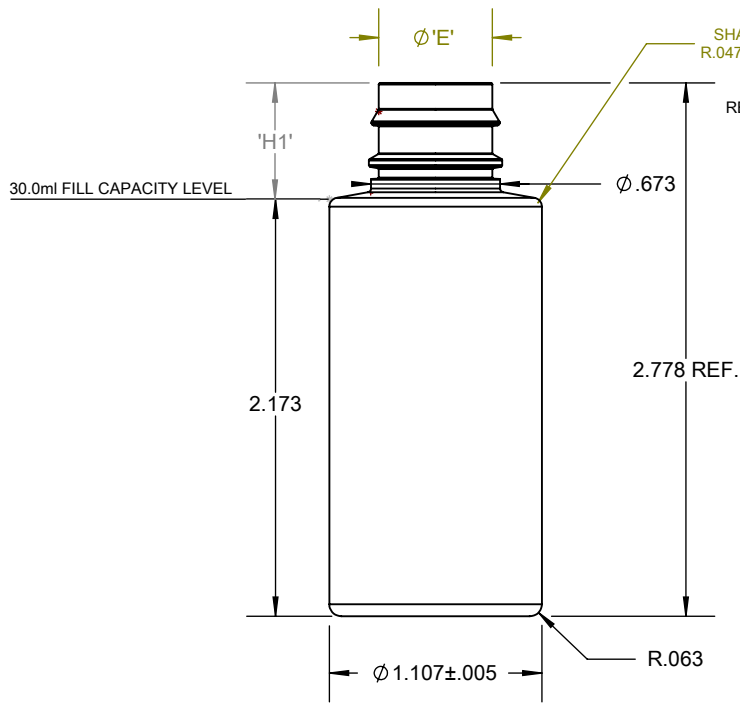
CONTROLLED
QA Received 12/14/15
lfk



ISO VIEW
 PLEASE REFER TO SHEET #2 FOR DIMENSIONS

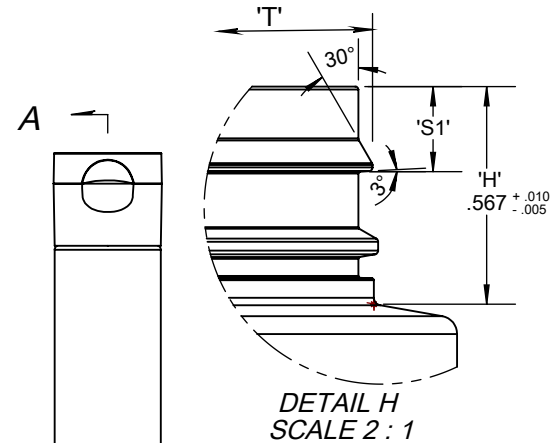
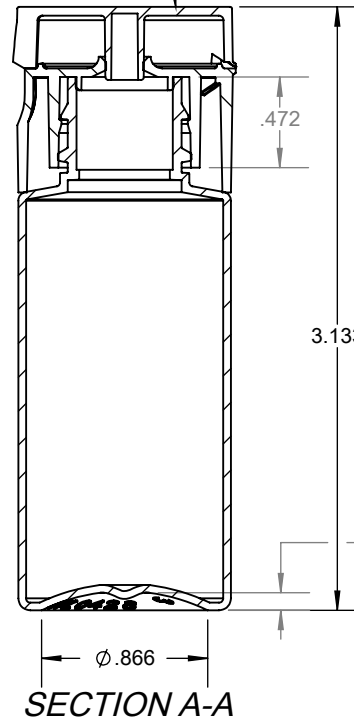
PART NUMBER & MATERIAL SPECIFICATION CHART			
DESCRIPTION	PART NUMBER	MATERIAL NUMBER	COLORANT NUMBER
1oz ROUND PETE 20mm SNAP NECK	R-BOTL0428	GP01	-
1oz ROUND CLEAR 100% PCR 20mm SNAP NECK	R-BOTL0428A	BARIQ.80	-
1oz. ROUND ORANGE PET 20mm SNAP NECK	BOTL0048	GP01	7M4178
1oz. ROUND GREEN PET 20mm SNAP NECK	BOTL0049	GP01	5M2529
1oz. ROUND WHITE PET 20mm SNAP NECK	BOTL0050	GP01	9M1499
1oz. ROUND BLUE PET 20mm SNAP FINISH	BOTL0051	GP01	4M3228

Product Design to be approved by customer before mold cavities are machined.		CUSTOMER NAME:		
THIS DRAWING SUBJECT TO STANDARD INDUSTRY S.P.I TOLERANCES ANY CHANGES TO THIS DRAWING SHOULD BE MADE TO THE PART MODEL SO THAT THE CHANGES ARE MADE PARAMETRICALLY		PART NAME SEE CHART		
		APPROVALS		PART # SEE CHART
DESIGNED & DETAILED BY:		DATE		WEIGHT: 5.0g+/- .3g
<i>Kevin Lutkins</i>		<i>11/5/15</i>		PROCESS: BM
VP OF N.P.D.		DATE		MATERIAL: SEE CHART
<i>Gary J. Kieffer</i>		<i>12-14-15</i>		CUSTOM DESIGN ; PROJECT OR WELDING ; BLZLN WELDING  V²
PROJECT ENG MGR		DATE		
<i>Steve Crawford</i>		<i>12-14-15</i>		
CAD REFERENCE #		QA MGR:		
BM0230		<i>Lynn Knopp</i>		
LIFECYCLE: RELEASE FOR PRODUCTION		SHEET SIZE A	VIEW SCALE 1:1	SHEET 1 OF 2

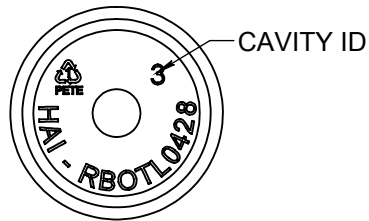


SHARP IN BLOW CAVITY
R.047 APPROX. ON BOTTLE

20MM SNAP CAP
REFERENCE P/N: R-CAPS0375



CONTROLLED
QA Received 12/14/15
Ifk



SPI NECK FINISH SPECIFICATIONS					
T	E	H1	-	S1	I
.666 ± .008	.592 ± .008	.605 ⁺⁰¹⁰ / _{-.005}	-	.222 ± .005	.502 ± .005
TPI	PITCH	TURNS	NECK FINISH		
N/A	N/A	N/A			
CAPACITY TO FILL LEVEL				30ml ± 1.0ml	
OVERFLOW CAPACITY				33.0ml ± 1.0ml	

Product Design to be approved by customer before mold cavities are machined.	CUSTOMER NAME:			
THIS DRAWING SUBJECT TO STANDARD INDUSTRY S.P.I TOLERANCES	PART NAME SEE CHART			
ANY CHANGES TO THIS DRAWING SHOULD BE MADE TO THE PART MODEL SO THAT THE CHANGES ARE MADE PARAMETRICALLY	APPROVALS		PART # SEE CHART	
THE INFORMATION ON THIS DRAWING IS CONFIDENTIAL AND IS THE SOLE PROPERTY OF CURRIER PLASTICS. NEITHER THIS DOCUMENT, NOR ANY INFORMATION DISCLOSED HEREIN SHALL BE REPRODUCED OR TRANSFERRED TO OTHER DOCUMENTS OR TO BE USED FOR MANUFACTURING PURPOSES OR DISCLOSED TO OTHERS FOR ANY PURPOSE EXCEPT AS SPECIFICALLY AUTHORIZED IN WRITING BY CURRIER PLASTICS	DESIGNED & DETAILED BY: <i>Kevin Lutkins</i>	DATE: 11/5/15	WEIGHT: 5.0g+/- .3g	
	VP OF N.P.D. <i>Gary J. Kieffer</i>	DATE: 12-14-15	PROCESS: BM	
	PROJECT ENG MGR <i>Steve Crawford</i>	DATE: 12-14-15	MATERIAL: SEE CHART	
	QA MGR: <i>Lynn Knopp</i>	DATE: 12/17/15	CUSTOM DESIGN ; SUBJECT OR WELDING ; BLZIN WELDING	
CAD REFERENCE # BM0230	SHEET SCALE A 1:1	VIEW SCALE 1:1	SHEET 2 OF 2	
LIFECYCLE: RELEASE FOR PRODUCTION	 V ²			