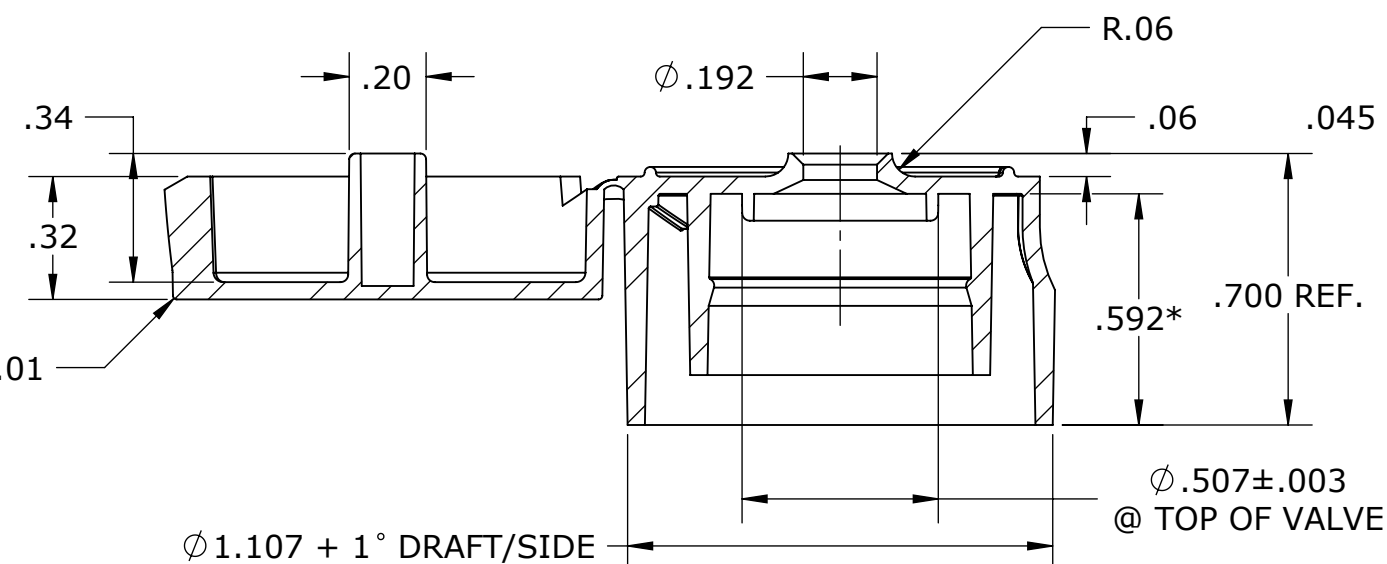
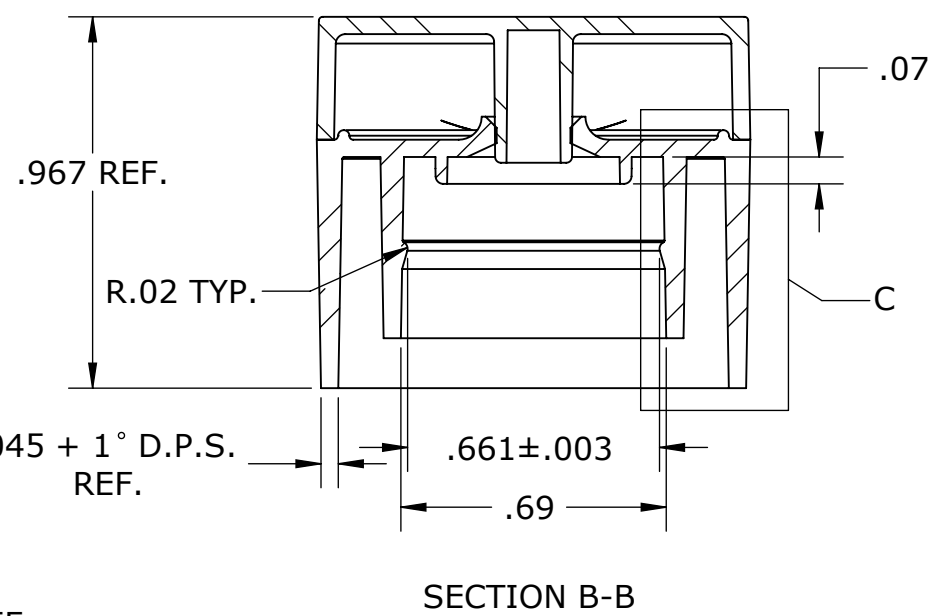


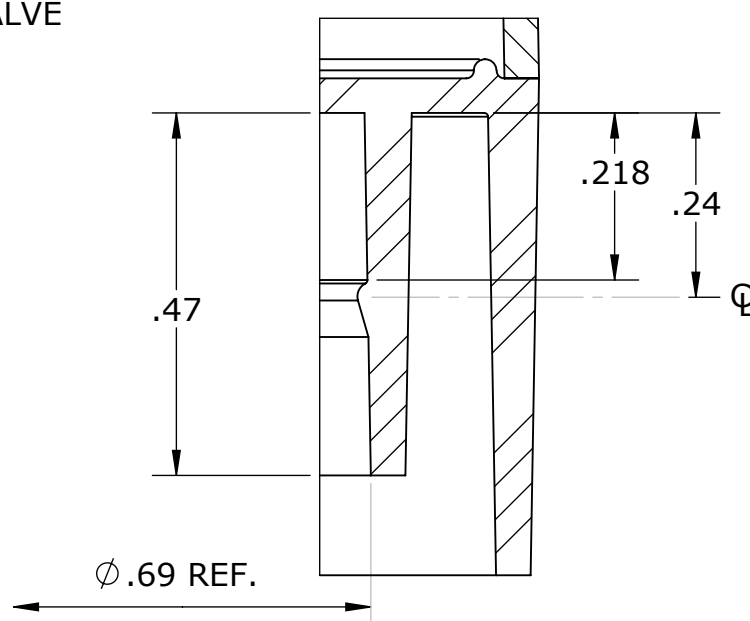
GATE LOCATION ON THUMB SURFACE



SECTION A-A

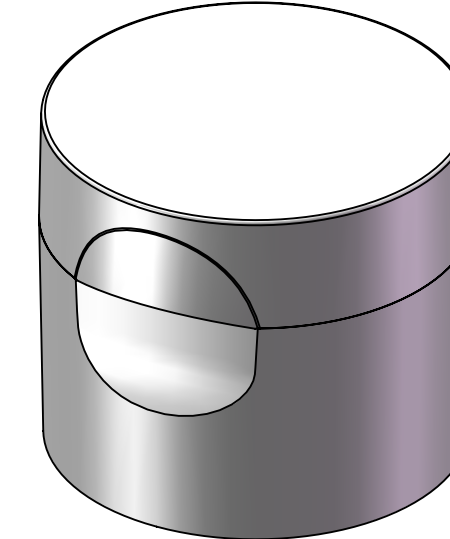
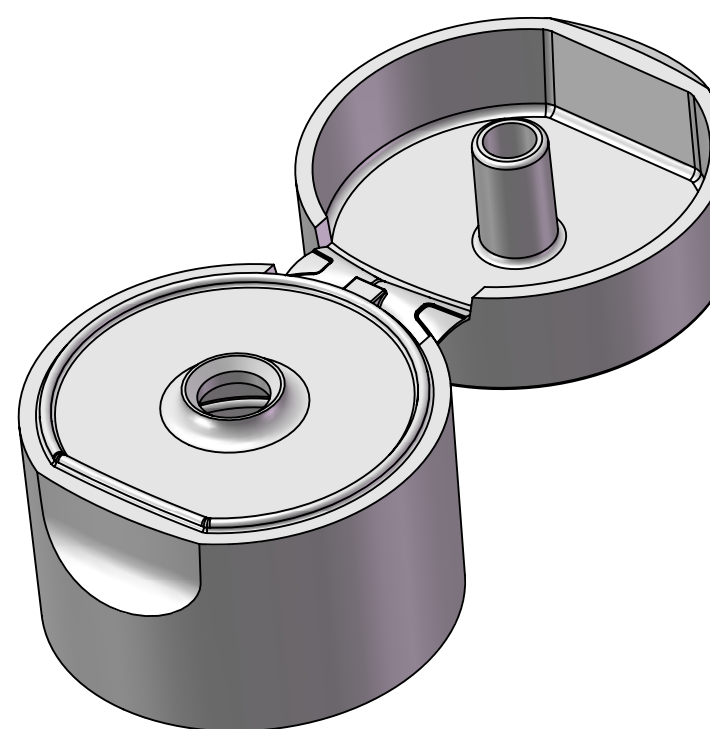


SECTION B-B



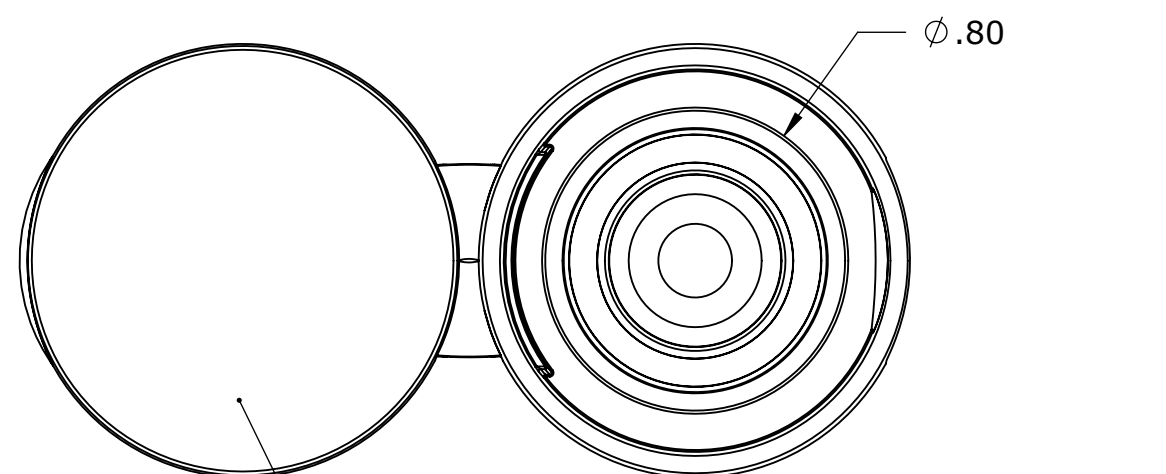
DETAIL C  
HEIGHT TO SNAP UNDERCUT  
SCALE 4 : 1

REVISIONS				
REV.	DR/ECN#	DESCRIPTION	DATE	APPROVED
1	-	<b>RELEASE FOR PRODUCTION</b> -CHANGED SKIRT LENGTH FROM .592 TO .602 BY ADDING .010 TO BOTTOM OF CAP SKIRT. OVERALL CLOSED CAP HEIGHT CHANGED FROM .957 TO .967 -CHANGED $\phi$ .507 TO $\phi$ .507+.006 -.000	9/18/2008	logk
1-01	1283	ADDED PART NUMBER R-CAPS0436 ADDED COLORANT CHART ASSOCIATED TO PART NUMBERS ADDED .700 TO SECTION A-A FOR QA CHECK ONLY CHANGED .66 IN SECTION B-B TO .656+.010-.000 CHANGED .507 +.006 -.000 TO .511+.010-.002	12/16/2009	logk
1-02	1345	ADDED PART NUMBER R-CAPS0306 WHITE TO COLORANT CHART	7/2/2010	logk
1-03	1356	CORRECTED PART NUMBER R-CAPS0360 TO INCLUDE THE 'DASH' ADDED CHAMFER ONTO THE SNAP BEAD CHANGED DIMENSION .602 TO .592	7/22/2010	logk
1-04	1435	ADDED PART NUMBER BIO-ADDITIVE PPBF-0701 UPDATED TITLE BLOCK TO NEW PDMWORKS REVISION SCHEME	12/22/2010	logk
1-05	1469	ADDED PART NUMBER CAPS0006 FOR COLORANT 3P1453 CREME	4/6/2011	logk
1-06	1471	UPDATED BIO-ADDITIVE PART NUMBER FROM PPBF-0701 TO PPI BD-0701 FOR PART NUMBER R-CAPS0366	7/5/2011	logk
1-07	ECN 1619	CHANGED .511+.010-.000 TO .507±.003 CHANGED .656+.010-.000 TO .661±.003 ADDED PART NUMBER CAPS0008 FOR GREEN COLORANT 5P2210	4/28/2012	logk
1-08	ECN 1969	ADDED PART NUMBER CAPS0057, COLOR #1-4454-13 @ 1% LDR, BLACK	3/26/2014	logk
1-09	ECN 2026	ADDED NEW PART NUMBER TO COLORANT CHART AS FOLLOWS: PART NUMBER: CAPS0070, COLORANT: 2P3152 AND COLOR: SILVER. UPDATED DRAWING FORMAT AND ADDED GRAM WEIGHT OF 4.45 gms.	7/7/2014	logk
1-10	ECN 3116	PART NUMBER CHANGE FOR BIO FROM PPI BD-0701 TO ECM6.0701	2/19/19	gfk





COLORANT CHART		
PART NUMBER	COLORANT/ADDITIVE NUMBER	COLOR
R-CAPS0375	7335A	NATURAL
R-CAPS0436	2P1827	TR. BLACK
R-CAPS0360	11002-18	WHITE
R-CAPS0366	ECM6.0701	NATURAL/BIO-ADDITIVE
CAPS0006	3P1453	CREME
CAPS0008	5P2210	GREEN
CAPS0057	1-4454-13@1%LDR	BLACK
CAPS0070	2P3152	SILVER

CONTROLLED  
QA Received 3/4/19  
mkb



MATTE SURFACE FINISH - EXTERIOR SURFACES

\* - MEASURED FROM TOP OF LAND SEAL TO BOTTOM OF SKIRT

Product Design to be approved by customer before mold cavities are machined.		CUSTOMER NAME:		
<b>ALL DIMENSIONS ARE IN INCHES</b> TOLERANCE: FRACTIONAL: $\pm$ 1/32 ANGULAR: $\pm$ 1° TWO PLACE DECIMAL: .01 THREE PLACE DECIMAL: .005 UNLESS OTHERWISE SPECIFIED ANY CHANGES TO THIS DRAWING SHOULD BE MADE TO THE PART MODEL SO THAT THE CHANGES ARE MADE PARAMETRICALLY		PART NAME 20mm SNAP CAP		
THE INFORMATION ON THIS DRAWING IS CONFIDENTIAL AND IS THE SOLE PROPERTY OF CURRIER PLASTICS. NEITHER THIS DOCUMENT, NOR ANY INFORMATION DISCLOSED HEREIN SHALL BE REPRODUCED OR TRANSFERRED TO OTHER DOCUMENTS OR TO BE USED FOR MANUFACTURING PURPOSES OR DISCLOSED TO OTHERS FOR ANY PURPOSE EXCEPT AS SPECIFICALLY AUTHORIZED IN WRITING BY CURRIER PLASTICS		APPROVALS PERSONS RESPONSIBLE      DATE DESIGNED & DETAILED BY: <i>Kevin Lutkins</i> 2/19/19 VP OF P.D.: <i>Gary J. Rieffer</i> 2-20-19 PROJECT ENG MGR: <i>Todd D. Lindsay</i> 3/4/19 QA MGR: <i>Michael Byrne</i> 3/4/19		PART # SEE COLORANT CHART WEIGHT: 4.45 gms MATERIAL: PP CUSTOM DESIGN / INJECTION MOLDING / BLOW MOLDING 
CAD REFERENCE # IM0084	LIFECYCLE: RELEASE FOR PRODUCTION	SHEET SIZE C	VIEW SCALE 1:1	SHEET 1 OF 1